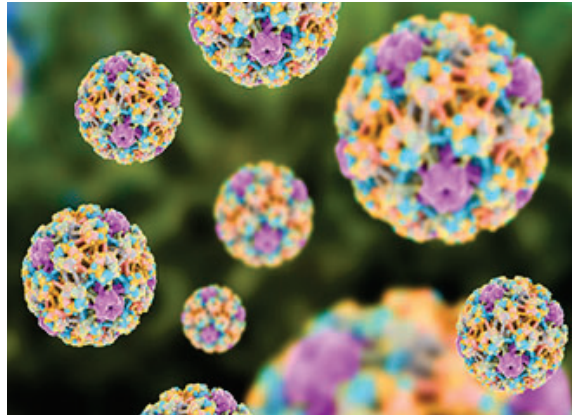


## GenoFast MOLECULAR DIAGNOSTICS



- HPV - MHPVF-B** (Detects **Human Papillomavirus** 15 High Risk types)
- HPV- MHPVF1618-B** (Detects **Human Papillomavirus** 15 types of High Risk in single tube + HPV16 & 18)
- HPV- GHPVF-B** Detects **Human Papillomavirus** 15 types High Risk with real time IFD)
- HPV- MHPVPCR-B**( Detects **Human Papillomavirus** 15 types High Risk genotyping 15 04 80 03)
- HPV- MHPVPCR1618-B** Detects **Human Papillomavirus** 15 types High Risk 15 04 80 03 PCR amplification)
- BCD-100** (Detects **Clostridium Difficile** with PCR amplification analysis)
- BCID-100** (Detects **Clostridium Difficile** with PCR isothermal analysis)
- BICB-100** (Detects **Coxiella Burnetii** with PCR amplification analysis)
- BICB -100** (Detects **Coxiella Burnetii** with isothermal amplification analysis)
- BMP-100** (Detects **Mycoplasma Pneumonia** with PCR amplification analysis)
- BIMP-100** (Detects **Mycoplasma Pneumonia** with isothermal amplification analysis)
- BNG-100** (Detects **Neisseria Gonorrhoeae** with PCR amplification analysis)
- BING-100** (Detects **Neisseria Gonorrhoeae** with isothermal amplification analysis)
- BYP-100** (Detects **Yersinia Pestis** with PCR amplification analysis)
- BIYP-100** (Detects **Yersinia Pestis** with isothermal amplification analysis)
- BBA-100** (Detects **Bacillus Anthracis** with PCR amplification analysis)
- BIBBA-100** (Detects **Bacilli's Anthracis** ith isothermal amplification analysis)
- BFT-100** (Detects **Francisella Tularensis** with PCR amplification analysis)
- BIFT-100** (Detects **Francisella Tularensis** with isothermal amplification analysis)
- BHA-100** (Detects **Haemophilus** with PCR amplification analysis)
- BIHA-100** (Detects **Haemophilus** with isothermal amplification analysis)
- BLE-100** (Detects **Legionella** with PCR amplification analysis)
- BILE-100** (Detects **Legionella** with isothermal amplification analysis)
- BLI-100** (Detects **Listeria** with PCR amplification analysis)
- BILI-100** (Detects **Listeria** with isothermal amplification analysis)
- BSA-100** (Detects **Salmonella** with PCR amplification analysis)
- BISA-100** (Detects **Salmonella** with isothermal amplification analysis)
- BSTA-100** (Detects **Staphylococcus** with PCR amplification analysis)
- BISTA-100** (Detects **Staphylococcus** with isothermal amplification analysis)
- BSTR-100** (Detects **Streptococcus** with PCR amplification analysis)
- BISTR-100** (Detects **Streptococcus** with isothermal amplification analysis)
- BTRI-100** (Detects **Trichomonas Vaginalis** with PCR amplification analysis)
- BITRI-100** (Detects **Trichomonas Vaginalis**with isothermal amplification analysis)
- BIMSTD-100** (Detects **multiple STD infections** with isothermal amplification analysis)
- BIHBV-100** (Detects **HBV** with isothermal amplification analysis)
- BIHCV-100** (Detects **HCV** with isothermal amplification analysis)
- BIHIV-100** (Detects **HIV** with isothermal amplification analysis)
- BIMB-100** (Detects **HBV, HCV, HIV** with isothermal amplification analysis)
- BHNGS-100** (Detects **Hot Spot Cancer** based on Illumina NGS platform)
- BLNGS-100** (Detects **Lung Cancer** based on Illumina NGS platform)
- BBNGS-100** (Detects **Breast Cancer** based on Illumina NGS platform)
- BCNGS-100** (Detects **Colorectal Cancer** based on Illumina NGS platform)
- BTDPCR-100** (Detects **Tumor Mutation** using digital PCR amplification analysis)
- BTDPCR-100** (Detects **Aneuploidy** using digital PCR amplification analysis)